

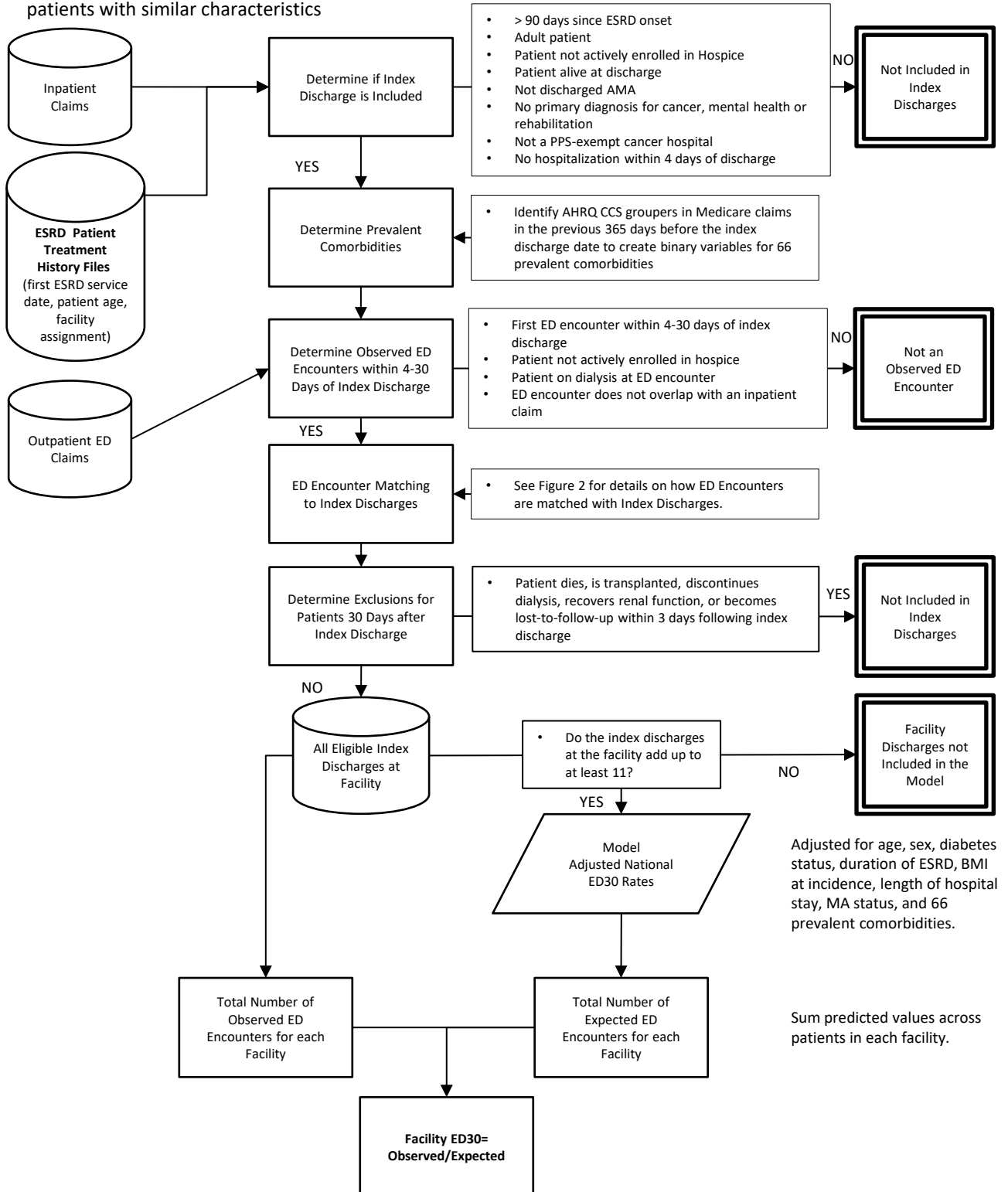
### 1.18a Attach measure score calculation diagram

**Figure 1: Measure Calculation Flowchart**

**CBE ID 3566: Standardized Ratio of Emergency Department Encounters Occurring Within 30 Days of Hospital Discharge (ED30):** The ratio of observed to expected ED encounters occurring within 30 days of discharge

**Numerator Statement:** Number of emergency department encounters observed

**Denominator Statement:** Number of emergency department encounters expected based on the national rate for patients with similar characteristics



\*Multiple data sources include CMS EQRS patient-specific clinical and administrative data, the CMS Annual Facility Survey (Form CMS-2744), Medicare dialysis and hospital payment records, the CMS Medical Evidence Form (Form CMS-2728), transplant data from the Organ Procurement and Transplant Network (OPTN), the Death Notification Form (Form CMS-2746, and the Social Security Death Master File.

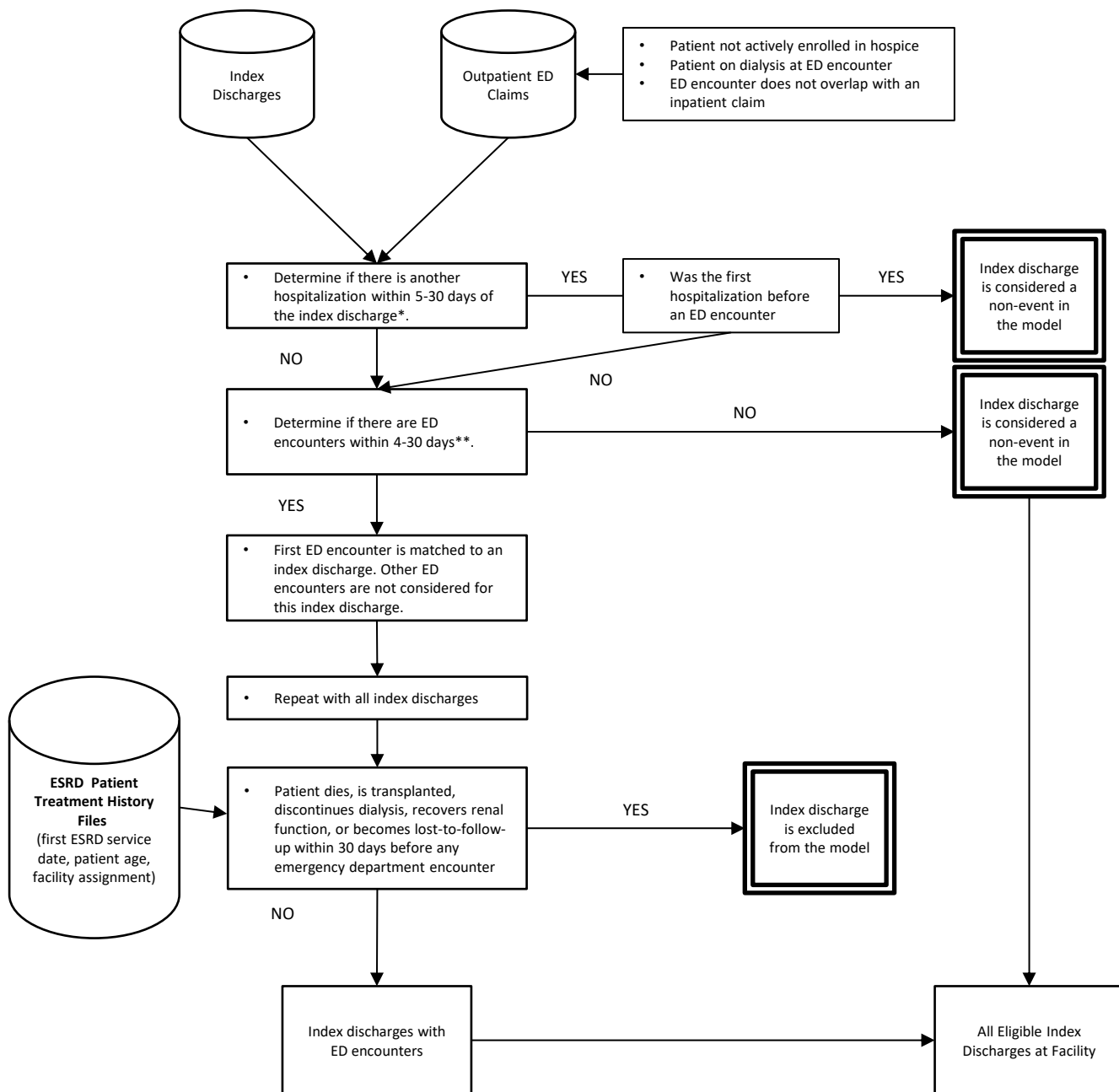
## Figure 2: Emergency Department Merging with Index Discharge Criteria

### Standardized Ratio of Emergency Department Encounters Occurring Within 30 Days of Hospital Discharge

**(ED30)\*\*\*:** The ratio of observed to expected ED encounters occurring within 30 days of discharge

**Numerator Statement:** Number of emergency department encounters observed

**Denominator Statement:** Number of emergency department encounters expected based on the national rate for patients with similar characteristics



\* We have already excluded index discharges with hospitalizations 1-4 days after discharge.

\*\* ED encounters that occur before the 4<sup>th</sup> day after index discharge are not considered.

\*\*\* An index discharge is considered day 0.